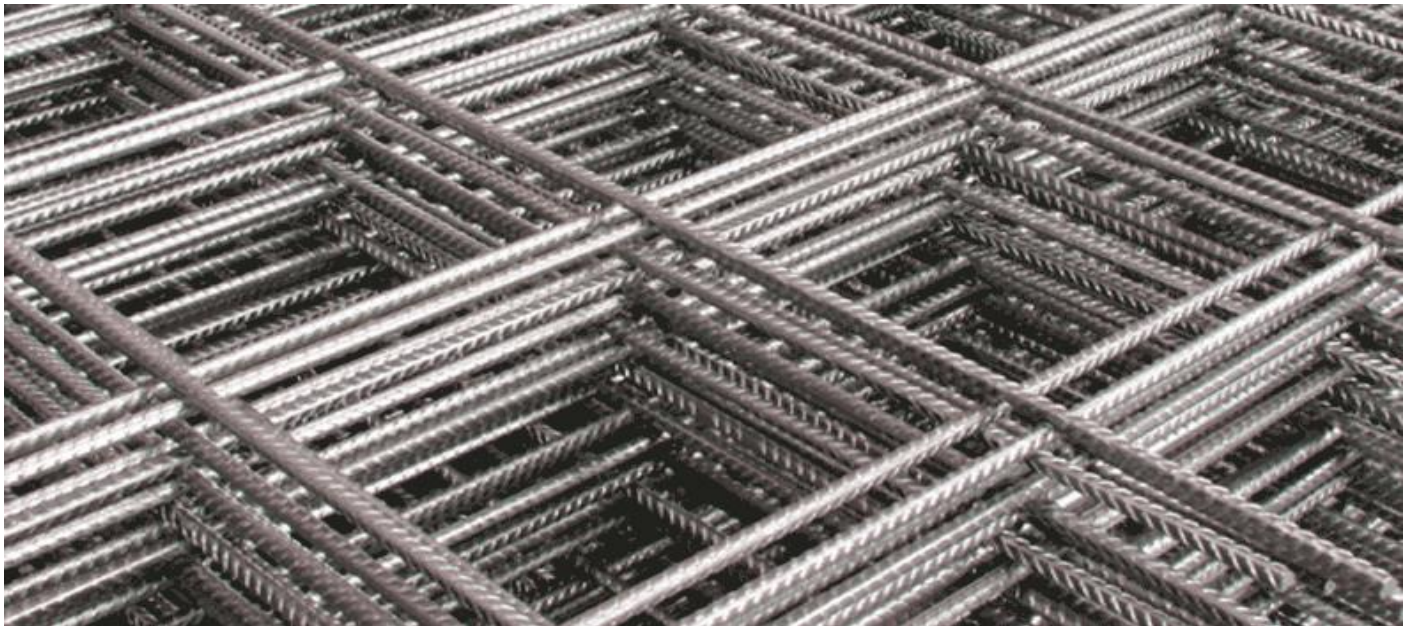


MALLAS ELECTROSOLDADAS



Designación	No. de barras por malla		Diámetro		Separación		Longitud pelos		Peso	Cuántia principal
	Long 6.00	Trans 2.35	Long mm	Trans mm	Long mm	Trans mm	Long mm	Trans mm	Nominal kg	Nominal cm ² /m
XY Mallas electrosoldadas GERDAU DIACO con refuerzo Principal en una dirección (Panel 2.35 x 6.00 m)										
XY-084	16	24	4.0	4.0	150	250	125	50	15.1	0.84
XY-106	16	24	4.5	4.0	150	250	125	50	17.6	1.06
XY-131	16	24	5.0	4.0	150	250	150	50	20.4	1.31
XY-158	16	24	5.5	4.0	150	250	125	50	23.5	1.58
XY-221	16	24	6.5	4.0	150	250	125	50	30.6	2.21
XY-257	16	24	7.0	5.0	150	250	125	50	37.7	2.57
XY-335	16	24	8.0	5.0	150	250	125	50	46.6	3.35
XY-378	16	24	8.5	5.0	150	250	125	50	51.5	3.78
XY Mallas electrosoldadas GERDAU DIACO con refuerzo Principal en dos direcciones (Panel 2.35 x 6.00 m)										
XX-0.50	10	24	4.0	4.0	150	150	125	50	11.5	0.50
XX-0.63	12	30	4.0	4.0	150	150	100	75	14.1	0.63
XX-084	16	40	4.0	4.0	150	150	75	50	18.8	0.84
XX-106	16	40	4.5	4.5	150	150	75	50	23.8	1.06
XX-131	16	40	5.0	5.0	150	150	75	50	29.3	1.31
XX-158	16	40	5.5	5.5	150	150	75	50	35.5	1.58
XX-188	16	40	6.0	6.0	150	150	75	50	42.2	1.88
XX-221	16	40	6.5	6.5	150	150	75	50	49.6	2.21
XX-257	16	40	7.0	7.0	150	150	75	50	57.4	2.57
XX-295	16	40	7.5	7.5	150	150	75	50	65.9	2.95
XX-335	16	40	8.0	8.0	150	150	75	50	75.1	3.35
XX-378	16	40	8.5	8.5	150	150	75	50	84.7	3.78